

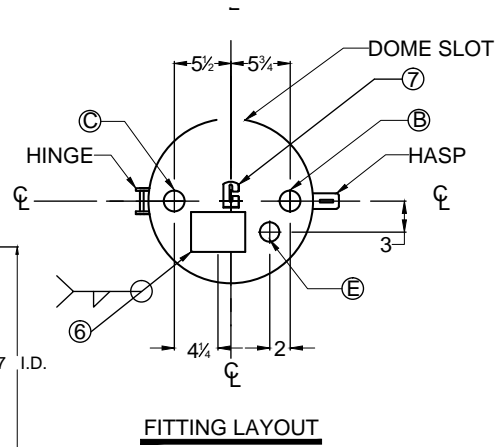
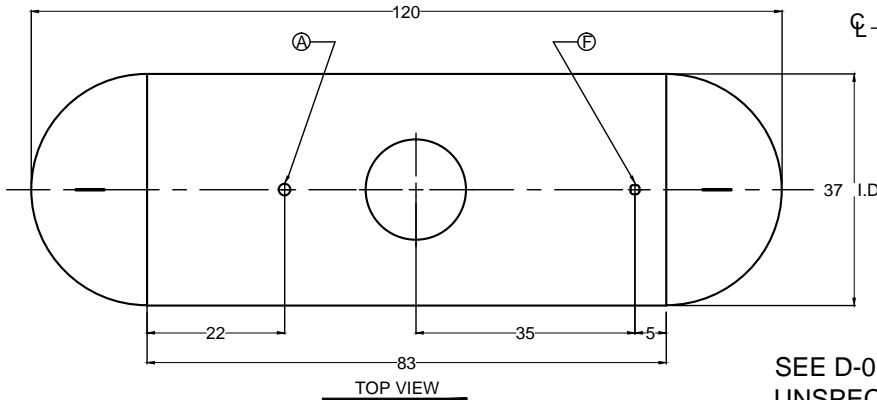
maxquip

Oil & Gas Catalogue [2019]

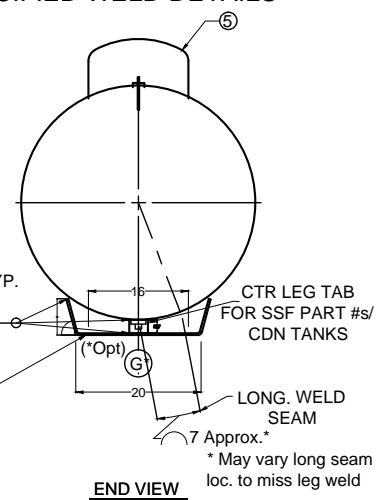
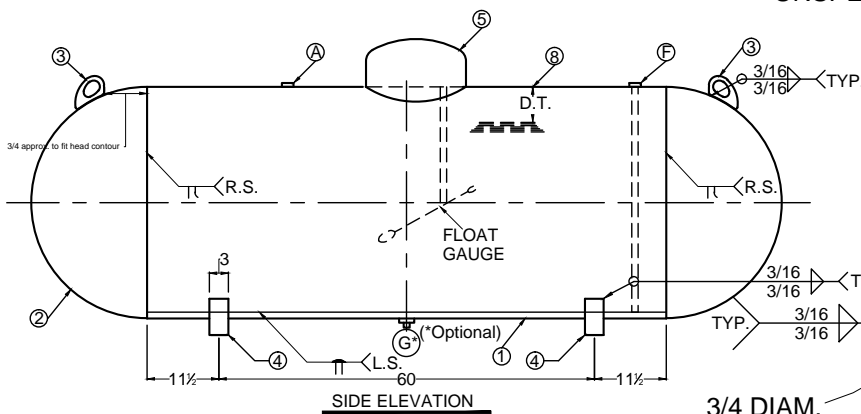


www.maxquip.ca | 1.866.629.7847

Standard AG 500 Gallon



SEE D-01 FOR ANY UNSPECIFIED WELD DETAILS



3/4 DIAM. HOLES (4) PLACES

NOTE: TANK MUST BE INSTALLED LEVEL, WITH ALL LEGS IN SAME PLANE TO ASSURE EVEN DISTRIBUTION OF LOADS AND OPTIMIZE ACCURACY OF GAUGE DEVICE.

PN: 0105001XSF
 0105211XSF (W/DRAIN)
 0105001XSSF - FOR CANADA W/ CTR LEG TAB
 0105211XSSF (W/DRAIN) - FOR CANADA W/ CTR LEG TAB

DATA PLATE DETAIL

MARK	QTY.	SIZE	TYPE	FITTINGS		SERVICE
				REGO		
A	1	1	XH FLG.	008684GT		RELIEF VALVE
B	1	1	XH FLG.	SQUIBB TAYLOR HA184AP OR ROCHESTER B 8981-27		FLOAT GAUGE
C	1	1-1/4	XH FLG.	L007579T		FILL VALVE
E	1	3/4	XH FLG.	PT007556RS10.5		MULTI VALVE
F	1	3/4	XH FLG W/ EVAC. TUBE	007590UT		CHEK-LOK
G* (*OPT)	1	1 1/4	XH FLG.			PLUGGED OPENING

MARK	QTY.	SIZE	TYPE	FITTINGS		SERVICE
				REGO		
A	1	1	XH FLG.	008684GT		RELIEF VALVE
B	1	1	XH FLG.	SQUIBB TAYLOR HA184AP OR ROCHESTER B 8981-27		FLOAT GAUGE
C	1	1-1/4	XH FLG.	L007579T		FILL VALVE
E	1	3/4	XH FLG.	PT007556RS10.5		MULTI VALVE
F	1	3/4	XH FLG W/ EVAC. TUBE	007590UT		CHEK-LOK
G* (*OPT)	1	1 1/4	XH FLG.			PLUGGED OPENING

CERTIFIED BY: QUALITY STEEL CORPORATION
 CLEVELAND, MS - FREMONT, OH - WEST JORDAN, UT

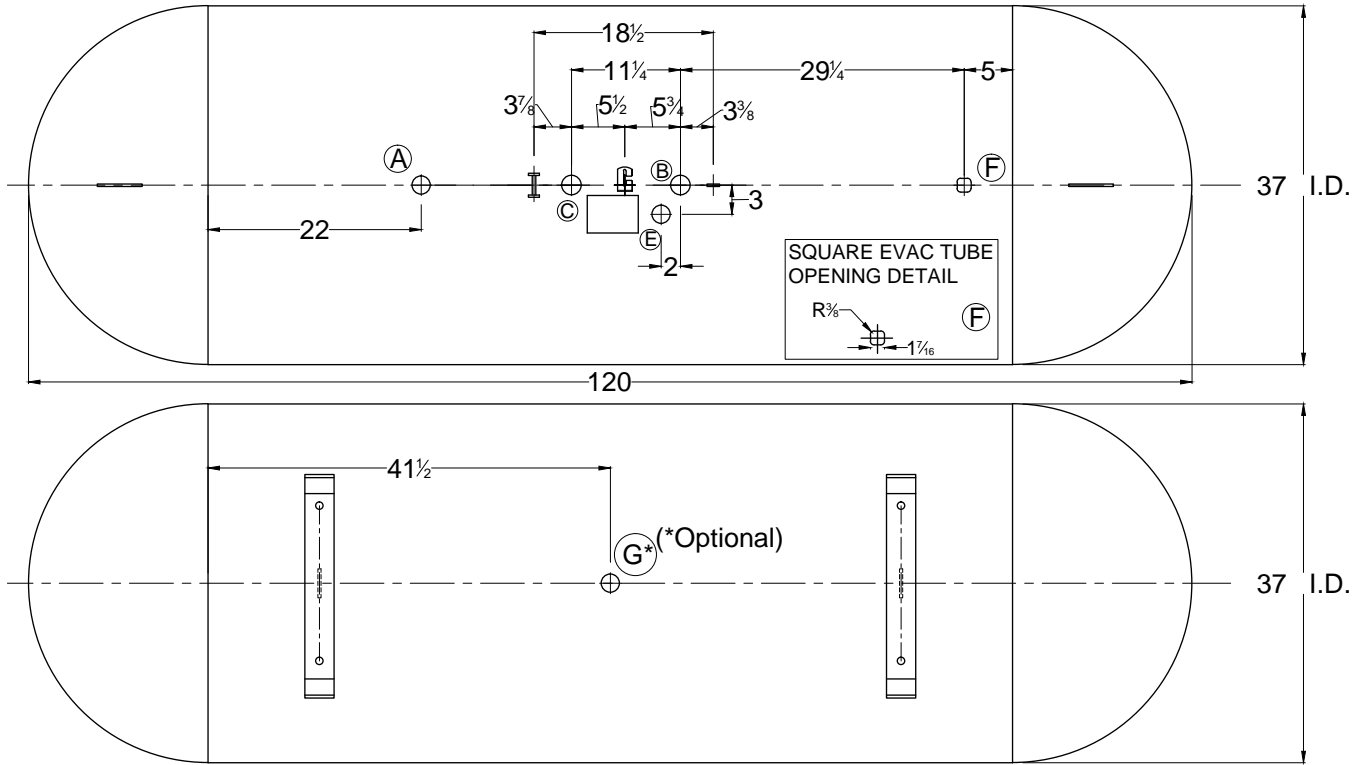
MAX. ALLOW. WORK. PRESS.	250 PSI	AT	400 °F.
M.D.M.T.	-20 °F.	AT	250 PSI
YEAR BUILT	CRN NO. M4213.5C		
U W. RT4	201	SER. NO.	*
LENGTH	120 IN.	OUTSIDE DIA.	37.5 IN.
HEAD THK.	.185 IN.	SHELL THK.	.218 IN.
ABOVE GROUND TYPE	AQ5	SURFACE AREA.	100 SQ. FT.
LISTED CONTAINER ASSEMBLY FOR LP GAS 547P	HEAD D.R.	HEMI.	WATER CAPACITY
			500 GALLONS

THIS CONTAINER SHALL NOT CONTAIN A PRODUCT HAVING A VAPOR PRESSURE IN EXCESS OF 215 PSI AT 100°F.
 DIP TUBE LENGTH - 80% FULL AT 40°F, D.T.= 110.5 IN.

Standard AG 500 Gallon

continued...

TOP VIEW



BOTTOM VIEW

MARK	QTY.	SIZE	HOLE DIA
A	1	1	1 13/16
B	1	1	1 13/16
C	1	1-1/4	2 1/16
E	1	3/4	1 9/16
F	1	3/4	SEE DETAIL
G* (*OPT)	1	1 1/4	2 1/16

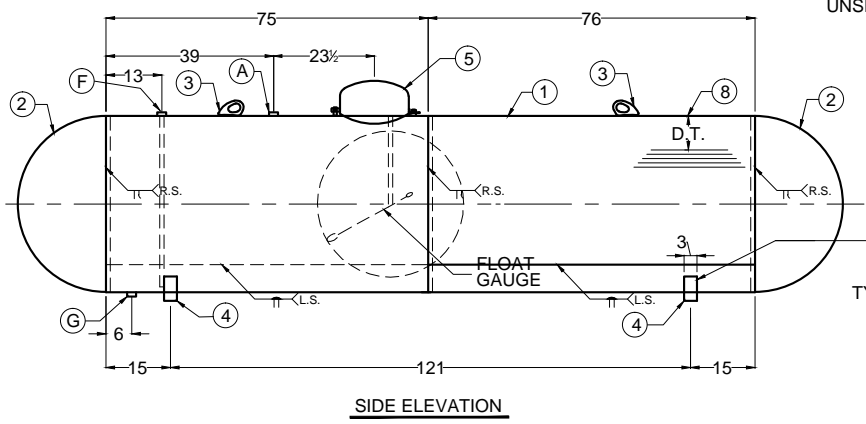
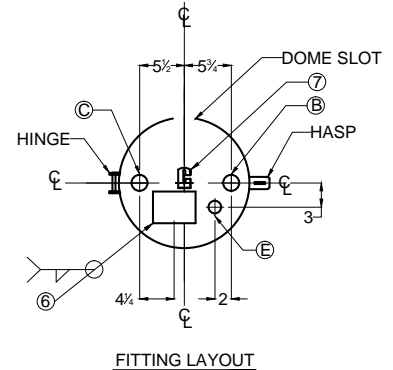
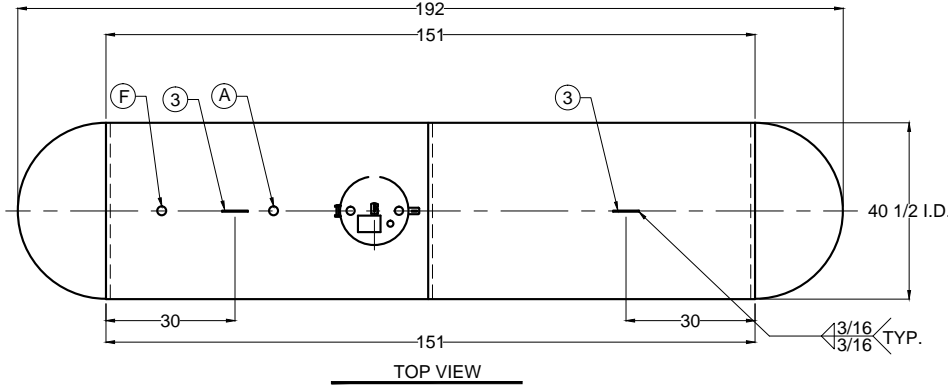
GENERAL SPECIFICATIONS	
WATER CAPACITY (GALLONS)	500
ALLOWABLE WORKING PRESSURE (PSIG)	250
JOINT EFFICIENCY: ASME UW-51 LONG SEAM	100 %
ASME UW-52 HEAD TO SHELL	80 %
HYDROSTATIC TEST PRESSURE (PSIG)	325
SURFACE AREA (SQ. FT.)	100
RELIEF VALVE SETTING (PSIG)	250
RELIEF DISCHARGE RATE - (CFM REQ'D.)	2340
HEAT TREATMENT NOT REQUIRED	
CODE: ASME SECTION VIII DIV. I	
STANDARDS: UNDERWRITERS LABORATORIES INC.	MH-7203
N.F.P.A. 58 LP GAS CODE	
MATERIAL SPECS:	
COUPLINGS SA-105	
TANK FLANGES SA-105 or SA-181	
ADAPTOR SA-105	
500 W.G. ABOVEGROUND PROPANE TANK-TYPE AQ5 (FORMERLY BS-AP)	

GENERAL NOTES:

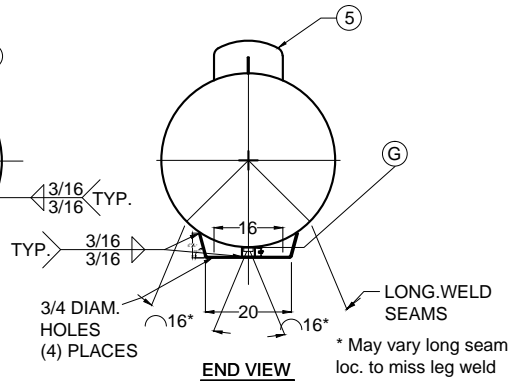
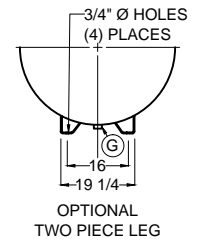
1. LIFTING LUGS DESIGNED FOR TOTAL LIFTING WEIGHT OF 1500#.
2. TOTAL EMPTY WEIGHT IS 950#.
3. ALL DIMENSIONS ARE IN INCHES UNLESS OTHERWISE SPECIFIED.
4. COMPLETE TANK DRIED TO REMOVE ALL MOISTURE.
5. ALL WEIGHT AND CAPACITIES ARE APPROXIMATE
6. EXTERIOR OF TANK TO BE GRIT BLASTED.
7. PAINT PER SHOP ORDER.
8. VACUUM PURGE TANK.
9. DIMENSIONS ARE SUBJECT TO CHANGE WITH OUT NOTICE.
(NON-PRESSURE RETAINING COMPONENTS ONLY)
10. THREADS OF ALL FITTINGS TO BE COATED WITH COMPOUND SUITABLE FOR USE WITH LP GAS.
11. FLOAT GAUGE TO BE INSTALLED WITH FLOAT ARM 45 ° OFF LONGITUDINAL CENTERLINE OF TANK.

Standard AG1000 Gallon

TANKS



SEE D-01 FOR ANY UNSPECIFIED WELD DETAILS



NOTE: TANK MUST BE INSTALLED LEVEL, WITH ALL LEGS IN SAME PLANE TO ASSURE EVEN DISTRIBUTION OF LOADS AND OPTIMIZE ACCURACY OF GAUGE DEVICE.

PART NUMBER: 0110001X (3/4" CHECK-LOK)
0110011X (1 1/4" CHECK-LOK)

MARK	QTY.	SIZE	TYPE	FITTINGS		SERVICE
				REGO		
A	1	1 1/4	XH FLG.	008685GT		RELIEF VALVE
B	1	1	XH FLG.	SQUIBB TAYLOR HA210AP OR ROCHESTER B 8981-28		FLOAT GAUGE
C	1	1-1/4	XH FLG.	L007579T		FILL VALVE
E	1	3/4	XH FLG.	PT007556RS11.3		MULTI VALVE
F	1	3/4	XH FLG V/ EVAC TUBE	007590UT		CHEK-LOK
F(OPT)	1	1 1/4	XH FLG W/ EVAC TUBE	007591UT		CHEK-LOK
G	1	1 1/4	XH FLG.			PLUGGED OPENING

MARK	QTY.	DESCRIPTION	DWG. NO.
1	2	SHELL- 0.239" X 75 3/4" X 127 3/8" - SA455 OR SA414G	
2	2	HEADS - 40 1/2" I.D. X 0.203" - HEMI: SA414C	
3	2	LIFTING LUGS	D - 63
4	4	TANK LEGS (SINGLE PIECE LEGS)	D - 3
4(ALT.)	2	TANK LEGS (TWO PIECE LEGS)	D - 2
5	1	DOME	D - 4
6	1	DATA PLATE	
7	1	REGULATOR BRACKET	D - 10
8	1	DIP TUBE LENGTH = 11.3" FOR 80% @ 40° F	

REV.	BY:	DESCRIPTION	DATE:
21	RGA	REVISED COMPANY NAME	12/08/07
22	RGA	REVISED BOM, SHELL QTY OF 2 WAS 1	01/25/08
23	wlo	CHANGE TO NARROW PLATE	03/05/09
24	wlo	MOVED VALVES TO CENTER SHELL	06/14/11
25	wlo	SWITCH LOCATION OF RELIEF AND CHECK LOK - MOVE DRAIN TO CENTER	10/05/11
26	wlo	MOVED RELIEF TO OPPOSITE SIDE OF DOME	11/02/11
27	wlo	UPDATE NAME PLATE	09/25/12
28	bts	2 SHELL TANK STYLE AND DP UPDATE	09/05/13
29	TWV	UPDATED HEAD & PLT THICKNESS & NAMEPLATE. COMBINED AND STANDARDIZED AWT & QSC DRAWINGS	06/19/15

DATA PLATE DETAIL

CERTIFIED BY: QUALITY STEEL CORPORATION
CLEVELAND, MS - FREMONT, OH - WEST JORDAN, UT

MAX. ALLOW. WORK. PRESS. **250** PSI AT **400** °F.
M.D.M.T. **-20** °F. AT **250** PSI

YEAR BUILT **201** CRN NO. **M3948.5C**
SER. NO. *****

LENGTH **192** IN. OUTSIDE DIA. **41** IN.
HEAD THK. **.203** IN. SHELL THK. **.239** IN.

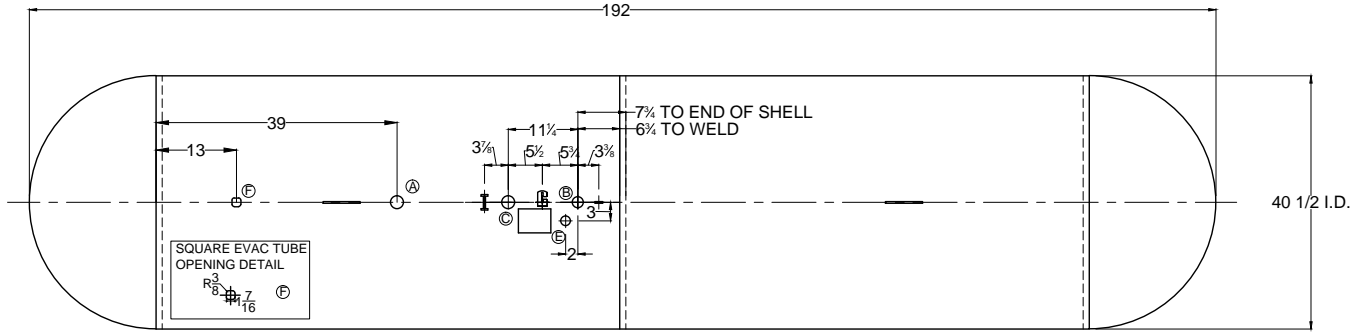
ABOVE GROUND TYPE **AQ7** SURFACE AREA. **172** SQ. FT.
HEAD D.R. **HEMI.**

LISTED CONTAINER ASSEMBLY FOR LP GAS 547P WATER CAPACITY **1000** GALLONS

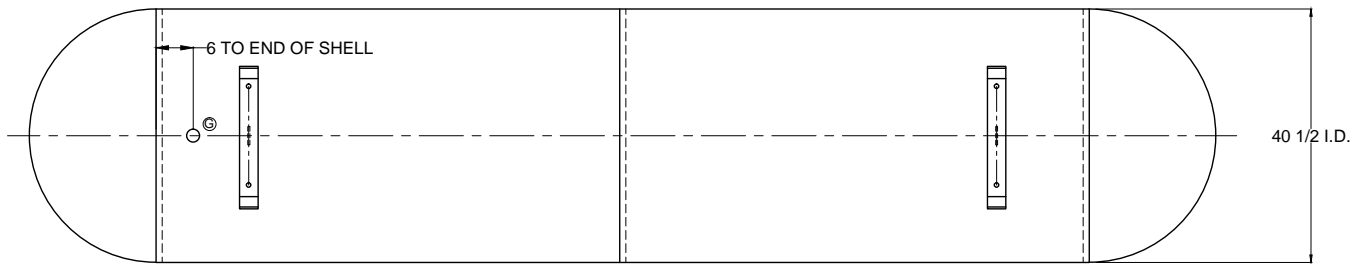
THIS CONTAINER SHALL NOT CONTAIN A PRODUCT HAVING A VAPOR PRESSURE IN EXCESS OF 215 PSI AT 100°F. DIP TUBE LENGTH - 80% FULL AT 40°F. D.T. = 11.3 IN.

Standard AG 1000 Gallon

continued...



TOP VIEW



BOTTOM VIEW

MARK	QTY.	SIZE	HOLE DIA
A	1	1-1/4	2 1/16
B	1	1	1 13/16
C	1	1-1/4	2 1/16
E	1	3/4	1 9/16
F	1	3/4	SEE DETAIL
F (OPT)	1	1 1/4	2 1/16
G	1	1-1/4	2 1/16

GENERAL SPECIFICATIONS	
WATER CAPACITY (GALLONS)	1000
ALLOWABLE WORKING PRESSURE (PSIG)	250
JOINT EFFICIENCY:	ASME UW-51 LONG SEAM 100 %
	ASME UW-52 HEAD TO SHELL 80 %
HYDROSTATIC TEST PRESSURE (PSIG)	325
SURFACE AREA (SQ. FT.)	172
RELIEF VALVE SETTING (PSIG)	250
RELIEF DISCHARGE RATE - (CFM REQ'D.)	3652
HEAT TREATMENT NOT REQUIRED	
CODE:	ASME SECTION VIII DIV. I
STANDARDS:	UNDERWRITERS LABORATORIES INC. MH-7203
	N.F.P.A. 58 LP GAS CODE
MATERIAL SPECS.: COUPLINGS	SA-105
	TANK FLANGES SA-105 or SA-181
	ADAPTOR SA-105

GENERAL NOTES:

1. LIFTING LUGS DESIGNED FOR TOTAL LIFTING WEIGHT OF 2700#.
2. TOTAL EMPTY WEIGHT IS 1800#.
3. ALL DIMENSIONS ARE IN INCHES UNLESS OTHERWISE SPECIFIED
4. COMPLETE TANK DRIED TO REMOVE ALL MOISTURE
5. ALL WEIGHTS AND CAPACITIES ARE APPROXIMATE
6. EXTERIOR OF TANK TO BE GRIT BLASTED
7. PAINT PER SHOP ORDER
8. VACUUM PURGE TANK
9. DIMENSION ARE SUBJECT TO CHANGE WITHOUT NOTICE. (NON-PRESSURE RETAINING COMPONENTS ONLY)
10. THREADS OF ALL FITTINGS TO BE COATED WITH COMPOUND SUITABLE FOR USE WITH LP GAS
11. FLOAT GAUGE TO BE INSTALLED WITH FLOAT ARM 45° OFF LONGITUDINAL CENTERLINE OF TANK.